
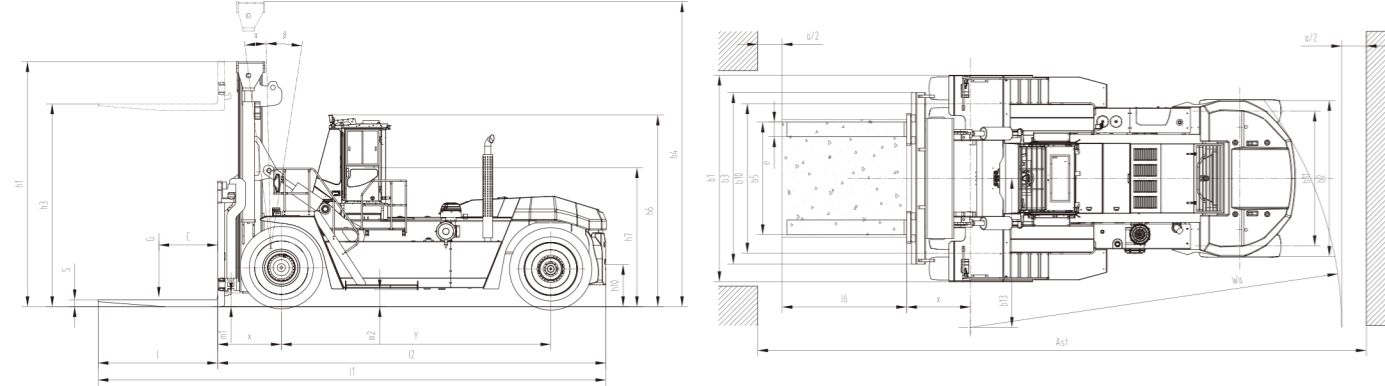
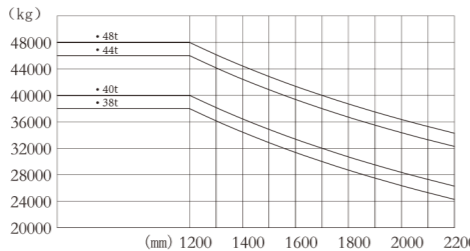


# Heavy IC Forklift Truck

Distinguishing mark							
	1.1	1.2	1.3	1.4	1.5		
1.1	Manufacturer						
1.2	Manufacturer's type designation	CPCD380-W61	CPCD400-W61	CPCD460-W61	CPCD480-W61		
1.3	Drive: electric (battery or mains), diesel, petrol, fuel gas	Diesel	Diesel	Diesel	Diesel		
1.4	Operator type: hand, pedestrian, standing, seated, order-picker	Seated	Seated	Seated	Seated		
1.5	Rated capacity/rated load	38000	40000	46000	48000		
1.6	Load centre distance	c (mm)	1200	1200	1200		
1.8	Load distance, centre of drive axle to fork	x (mm)	1300	1300	1300		
1.9	Wheelbase	y (mm)	5500	5500	5500		
Weight	2.1 Service Weight	kg	55000	56000	61000	62500	
Tyres, chassis	3.1	Tyres: solid rubber, superelastic, pneumatic, polyurethane	Pneumatic	Pneumatic	Pneumatic	Pneumatic	
	3.2	Tyre size, front	18.00-25-40PR	18.00-25-40PR	18.00-25-40PR	18.00-25-40PR	
	3.3	Tyre size, rear	18.00-25-40PR	18.00-25-40PR	18.00-25-40PR	18.00-25-40PR	
	3.5	wheels, number front / rear (x = driven wheels)	4x/2	4x/2	4x/2	4x/2	
Dimensions	3.6	Tread, front	b10 (mm)	3050	3050	3050	3050
	3.7	Tread, rear	b11 (mm)	2750	2750	2750	2750
	4.1	Tilt of mast/fork carriage forward/backward	$\alpha/\beta(^{\circ})$	6/10	6/10	6/10	6/10
	4.2	Height, mast lowered	h1 (mm)	4600	4600	5000	5000
	4.3	Free lift	s (mm)	130	130	130	130
	4.4	Lift	h3 (mm)	4000	4000	4000	4000
	4.5	Height, mast extended	h4 (mm)	6570	6570	7000	7000
	4.7	Height of overhead cabin	h6 (mm)	3920	3920	3920	3920
	4.8	Seat height relating to SIP	h7 (mm)	2840	2840	2840	2840
	4.12	Coupling height	h10 (mm)	860	860	860	860
	4.19	Overall length	l1 (mm)	10360	10360	10360	10360
	4.20	Length to face of forks	l2 (mm)	7920	7920	7920	7920
	4.21	Overall width	b1/b2(mm)	4215/3180	4215/3180	4215/3180	4215/3180
	4.22	Fork dimensions	s/e/l (mm)	130*300*2440	130*300*2440	130*300*2440	130*300*2440
	4.24	Fork-carriage width	b3 (mm)	3500	3500	3500	3500
	4.25	Distance between fork-arms	b5 (mm)	1050/3000	1050/3000	1050/3000	1050/3000
	4.31	Ground clearance, laden, below mast	m1 (mm)	320	320	320	320
	4.32	Ground clearance, centre of wheelbase	m2 (mm)	370	370	370	370
4.34	Aisle width with load length 2400mm	Ast (mm)	12340	12340	12340	12340	
4.35	Turning radius	Wa (mm)	7600	7600	7600	7600	
4.36	Minimum pivoting point distance	b13 (mm)	3040	3040	3040	3040	
Performance Data	5.1	Travel speed, laden/unladen	km/h	24/28	23/28	23/27	22/27
	5.2	Lift speed, laden/unladen	m/s	0.31/0.36	0.30/0.35	0.27/0.30	0.26/0.30
	5.3	Lowering speed, laden/unladen	m/s	0.43/0.42	0.43/0.42	0.44/0.40	0.44/0.40
	5.5	Drawbar pull, laden/unladen	N	370000/-	370000/-	370000/-	370000/-
	5.7	Gradeability, laden/unladen	%	25/-	25/-	25/-	25/-
	5.10	Service brake		Hydraulic control, wet multiplate type			
Combustion-engine	7.1	Parking brake		Electromagnetic hydraulic control, clamp type			
	7.1	Engine manufacturer/type	CUMMINS/QSM11-CT3	CUMMINS/QSM11-CT3	CUMMINS/QSM11-CT3	CUMMINS/QSM11-CT3	
	7.2	Engine power	kW	250	250	250	250
	7.3	Rated speed	r/min	2100	2100	2100	2100
	7.4	Number of cylinders/displacement	(-)/(cm <sup>3</sup> )	6/10800	6/10800	6/10800	6/10800
	7.9	Vehicle electrical system voltage	V	24	24	24	24
	7.10	Battery voltage/nominal capacity	V/Ah	2*12/120	2*12/120	2*12/120	2*12/120
		Rated torque	Nm/r/min	1674/1400	1674/1400	1674/1400	1674/1400
		Transmissions Manufacturer		DANA	DANA	DANA	DANA
		Transmissions Type		TE-30	TE-30	TE-30	TE-30
Addition Data	10.1	Operating pressure for attachments	bar 3	5/3	5/3	5/3	5/3
	10.2	Oil volume for attachments	l/min	255	255	255	255
	10.3	Hydraulic Tank - capacity (drain & refill)	liter	500	500	500	500
	10.4	Fuel tank capacity	liter	650	650	650	650
	10.7	Sound pressure level at the driver's seat	dB (A)	78	78	78	78



# 38-48t mast:(Pneumatic)


Type	Model	Max. fork height	Overall height		Tilt range	Capacity
			Lowered	Extended		
Wide view mast G400MX	G400M360	3600	4400	6170	6/10	40000
	G400M400	4000	4600	6570	6/10	40000
	G400M430	4300	4750	6870	6/10	40000
	G400M450	4500	4850	7070	6/10	40000
	G400M480	4800	5000	7370	6/10	40000
	G400M500	5000	5100	7570	6/10	40000
	G400M550	5500	5350	8070	3/6	39000
	G400M600	6000	5600	8570	3/6	38000
	G400M650	6500	5850	9070	3/6	36500
	G400M700	7000	6100	9570	3/6	35000
Wide view mast G480MX	G480M360	3600	4800	6570	6/10	48000
	G480M400	4000	5000	6970	6/10	48000
	G480M430	4300	5150	7270	6/10	48000
	G480M450	4500	5250	7470	6/10	48000
	G480M480	4800	5400	7770	6/10	48000
	G480M500	5000	5500	7970	6/10	48000
	G480M550	5500	5750	8470	3/6	47000
G480M600	6000	6000	8970	3/6	46000	
G480M650	6500	6250	9470	3/6	44500	
G480M700	7000	6500	9970	3/6	43000	



# Heavy IC Forklift Truck

with capacities of 38,000 to 48,000kg



 E-P Equipment Co., LTD  
Let's grow together...

[www.ep-ep.com](http://www.ep-ep.com)  
[www.epforklift.com](http://www.epforklift.com)

<p><b>China: (Headquarters)</b> E-P EQUIPMENT CO., LTD No. 121 YongHua Street, Shi Qiao Road, Xia Cheng Qu Hangzhou, China Tel: 86-571-28035676/28035633/28035657/28035653 Fax: 86-571-28035665 Email: <a href="mailto:info@ep-ep.com">info@ep-ep.com</a></p>	<p><b>USA:</b> E-P EQUIPMENT, USA CORP. 1770 Campton Road Inmam, SC 29349 Tel: 864-472-2776 Fax: 864-472-2765 E-mail: <a href="mailto:info@ep-ep.com">info@ep-ep.com</a></p>	<p><b>Japan:</b> E-P EQUIPMENT JAPAN #1052-16-10 Hirao, Inagi-shi Tokyo 206-0823 Japan Tel: 81-42-3506422 Fax: 81-42-3506423 E-mail: <a href="mailto:ep-japan@ep-ep.com">ep-japan@ep-ep.com</a></p>	<p><b>Korea:</b> E-P EQUIPMENT KOREA 1058-Ra Dong, Buck Yi-Dong, Ilsan/Gu, Koyang/Shi, Kyunggi/ Du, Korea Tel: 82-31-9254100 Fax: 82-31-9254102 E-mail: <a href="mailto:ep@ep-ep.co.kr">ep@ep-ep.co.kr</a></p>
---	--	---	--